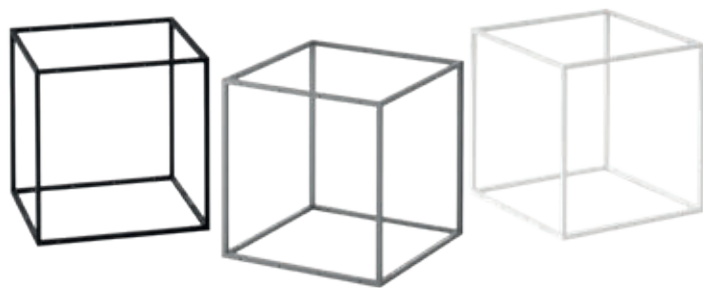




Dynamic Work Spaces



Adaptable. Durable. Elegant.

MAKING SPACE WORK

Work environments are changing. Today more than ever, mobile and stationary spaces have to balance the changing needs of users.

As we collaborate and create in new ways, the office environment should continuously adapt together with the people who use it.

With its versatile modularity, GRID solutions are ready to meet modern challenges and equip the multi-functional offices of the future. For over a decade, GRID has worked closely with interior

professionals to bring their design visions to life. From mobile room-in-room dividers to digital displays, GRID solutions are created with your needs at the centre.

Here we provide design inspiration and demonstrate how you can incorporate GRID's many features into your work space.

We look forward to working with you.

“The work and public spaces of the future should be reimagined to reflect and support changing user needs

WELCOME YOUR CLIENTS

RECEPTION AREA

Give your guests a warm welcome with an open layout and easy navigation. As the first point of contact, your reception area should be inviting and provide open space during busy periods. Greet new arrivals with a sleek and elegant front desk, and add sanitation stands that blend seamlessly with your design.

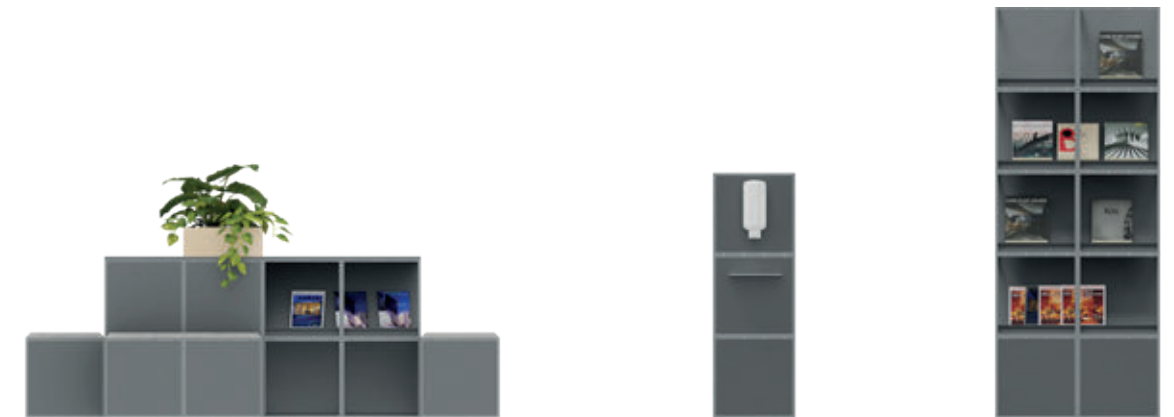
WAITING AREA

Help your guests relax in style. Room dividers, display shelving and plant boxes create a tranquil atmosphere for visitors to sit back, browse and relax while waiting. Space between seats can be

customised to make wait times more comfortable. Use the space to integrate your company's vision and reflect your style using deliberate interior design choices.

DISPLAY CHANGING INFORMATION

As schedules, pathways and procedures change, customised displays keep everyone informed. Placed wherever needed, mobile walls and integrated digital screens can easily and clearly communicate company profile videos and share upcoming meetings and workshops.



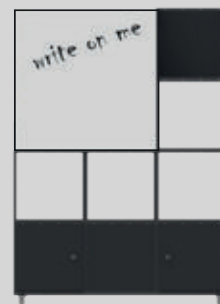


ENHANCE VIRTUAL MEETINGS
WITH A MOBILE GRID WALL.

ENCOURAGE COLLABORATION
WITH A WHITEBOARD.

ADD PANELS TO DIVIDE SPACE
AND CREATE A CLEAN
BACKGROUND.

THE VIRTUAL MEETING



MOBILE WALLS

What we see through the camera can make an impact. Even in the office, virtual meetings have become a regular part of daily work life. Sleek and simple or full of whiteboard notes, you can customise your GRID mobile wall to match the style of your meeting. By adding wheels, walls can be easily moved and coordinated with your work schedule.

SOUND ABSORBANCY

GRID mobile walls can create secluded meeting spaces – even in an open-plan office. Sound-

absorbing felt panels can be added to the wall to reduce disturbance and minimise background noise. This makes meetings more comfortable for both colleagues behind the wall and clients behind the screen.

CUSTOM PRESENTATIONS

Strengthen your brand presence by adding your company logo on either a printed panel or an integrated monitor. Whiteboards are a great way to showcase work in progress, while cork and textile boards add a soft visual contrast to the GRID design.



THE PHYSICAL MEETING

COLLABORATIVE SPACES

We are stronger together. A flexible and collaborative work environment can motivate your team and inspire new possibilities. With the flexible GRID system, you can provide adequate space and adapt the design to suit your company's culture and workflow.

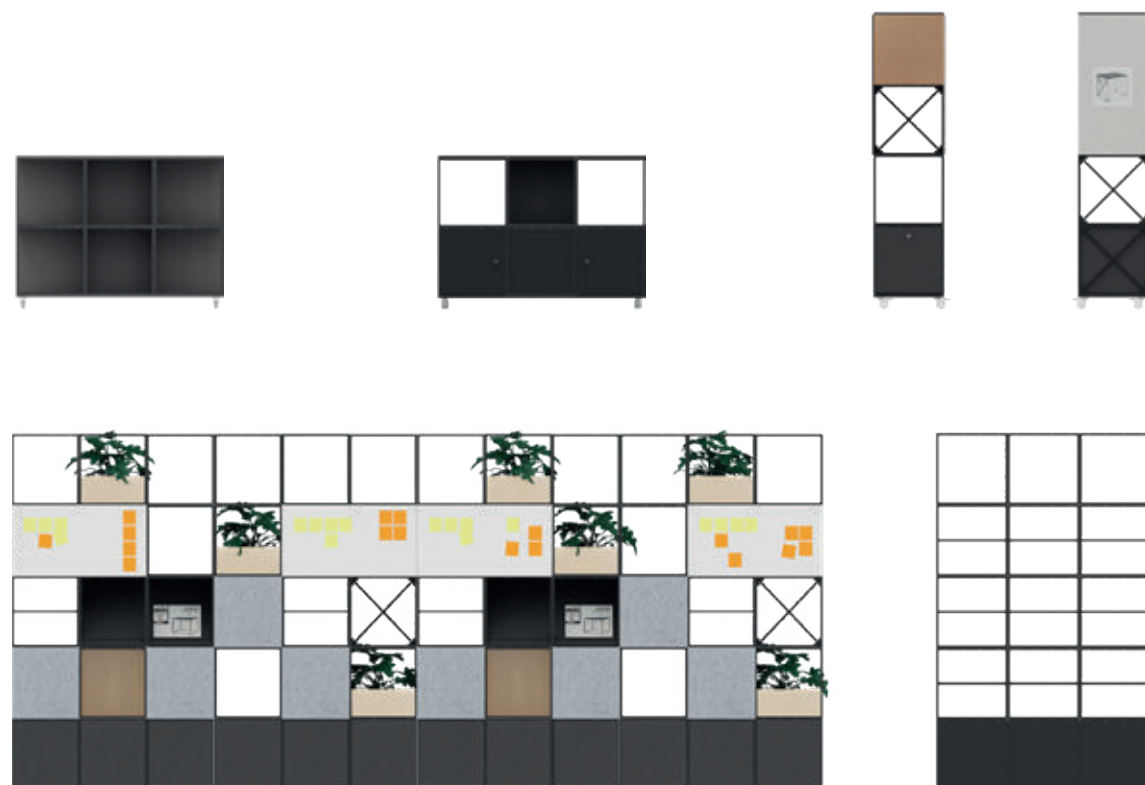
GRID modules with sound-absorbing felt panels act as room dividers to separate quieter zones from active areas used for breaks and meetings. The placement of whiteboards, panels and magazine shelving lets you customise the style and format of your collaborative space.

STAY MOBILE

Make your space multi-purpose. Work or play, GRID modules with castors can be easily moved to support lunch breaks, collaborative meetings and social events. The shelving within the unit provides both storage and display.

SHARE KNOWLEDGE

When you're in the middle of a meeting, you want creative tools that make information more accessible. Perfect for collaborative meetings and visualisations, whiteboards on your GRID unit make it easy to bounce ideas and brainstorm new solutions.





TRANSPARENCY

ADAPT YOUR OPEN OFFICE

For decades, open plan offices have been the first choice for fast-paced, collaborative and agile work environments. Today, trends and distance requirements are changing the face of our wide open spaces. Hybrid designs are key when designing safe spaces that inspire focus, engagement and inspiration.

GRID is created with flexibility in mind. From smaller, stationary activities to wider collaborative events, the GRID system can be designed to create divisions and define spaces in any office environment.

CREATE AN OPEN WALL

Create an open look while dividing the room. Panels and cross braces can be placed on any side of the module to close off space or create a playful design. Transparent acrylic panels can also be added for an open look that lets in more light.

ADD GREEN ELEMENTS

Plant life improves air quality and well-being in office environments. A colourful and aesthetic addition to your space, plants can be placed anywhere in your GRID unit using our specialised plant boxes. We recommend artificial plants in high areas where it is difficult to water.

THE MODERN WORK SPACE REQUIRES
CREATIVE USE OF DISTANCING AND
SEPARATION.

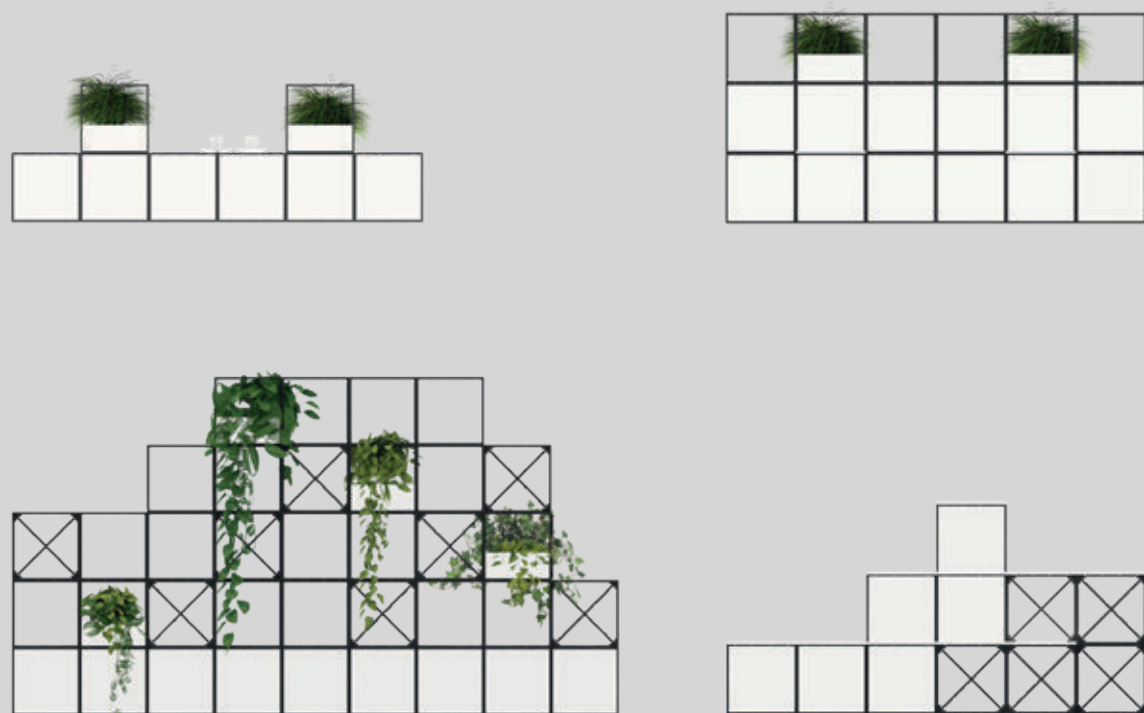
GRID UNITS CAN DIVIDE THE ROOM
WHILE PRESERVING A SLEEK AND OPEN
ENVIRONMENT.

A FRESH PERSPECTIVE.

WITH OUR PLANT BOXES, GREENERY
BECOMES PART OF THE DÉCOR.

GRID BOX SIDE PANELS CAN BE
USED TO HOLD PLANTS OR SIMPLY
AS STORAGE.





NATURAL ENVIRONMENTS

CREATE SPACE OUTDOORS

You can truly work from anywhere. GRID modules, cross braces and plywood top panels are durable, weather resistant and suitable for outdoor use. Whether you are eating lunch, holding a meeting or getting some fresh air, the structure can stand out or integrate seamlessly into your outdoor environment.

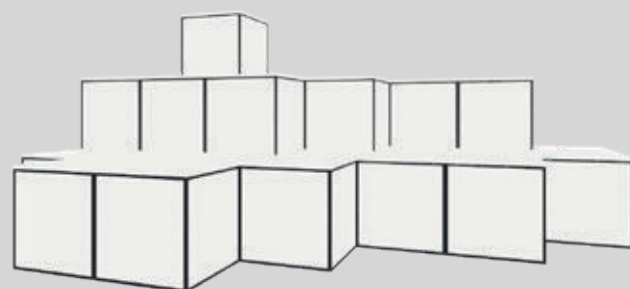
TAKE A SEAT

Take a seat and get some fresh air. With cross braces or side panels for support, GRID modules

become seats. Whether attached to the unit or as singular modules, GRID modules are light and can be easily adapted to create a gathering space for discussions and hangouts.

BRIGHTEN UP THE MOOD

From day to night, your GRID system can set the scene. Placing LED lights behind frosted acrylic side panels will create radiant illumination that is evenly lit across the unit. Customised to your own colours and office atmosphere, lighting can attract and audience and represent your brand.



CREATE YOUR OWN SOCIAL OASIS
IN THE MIDDLE OF THE VIBRANT CITY.



REUSE BEFORE YOU RECYCLE

SUSTAINABLE GROWTH

Sustainable growth means you need to reduce while you expand. As the way you work changes, your interior design system should evolve with you. Transform your room divider into seating or your storage into a display.

With its modular flexibility, GRID modules can be taken apart and built again in new ways – a future-proof investment that can last for years to come.

All components are designed and produced in Denmark, and we always strive towards developing and optimising our modular GRID system.

At the end of its life cycle, the basic module can be broken down into granulate to be used in the production of new products. Whether you reuse or recycle, GRID modules are a sustainable choice for interior design.



EXPLORE THE
TRANSFORMATION OF 48
GRID MODULES INTO THREE
UNIQUE CONFIGURATIONS.



►
CREATE STORAGE
- ADD TOP PANELS.



►
CREATE MOBILE UNITS
- ADD WHEELS.



►
CREATE TIERED SEATING
- ADD SEATS
AND CROSS BRACES.



Dynamic Work Spaces

January 2022

GRID System ApS

Smedevangen 2

DK-3540 Lynge

Denmark

+45 7262 6575

grid@gridsystem.dk

www.gridsystem.dk

www.instagram.com/gridsystem.dk

www.facebook.com/gridsystem

www.pinterest.com/gridsystemdk

www.linkedin.com/company/gridsystem

www.twitter.com/gridsystemdk