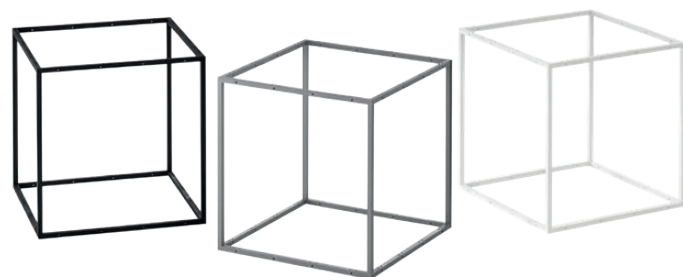




# GRID

## Colours & Materials

October 2020



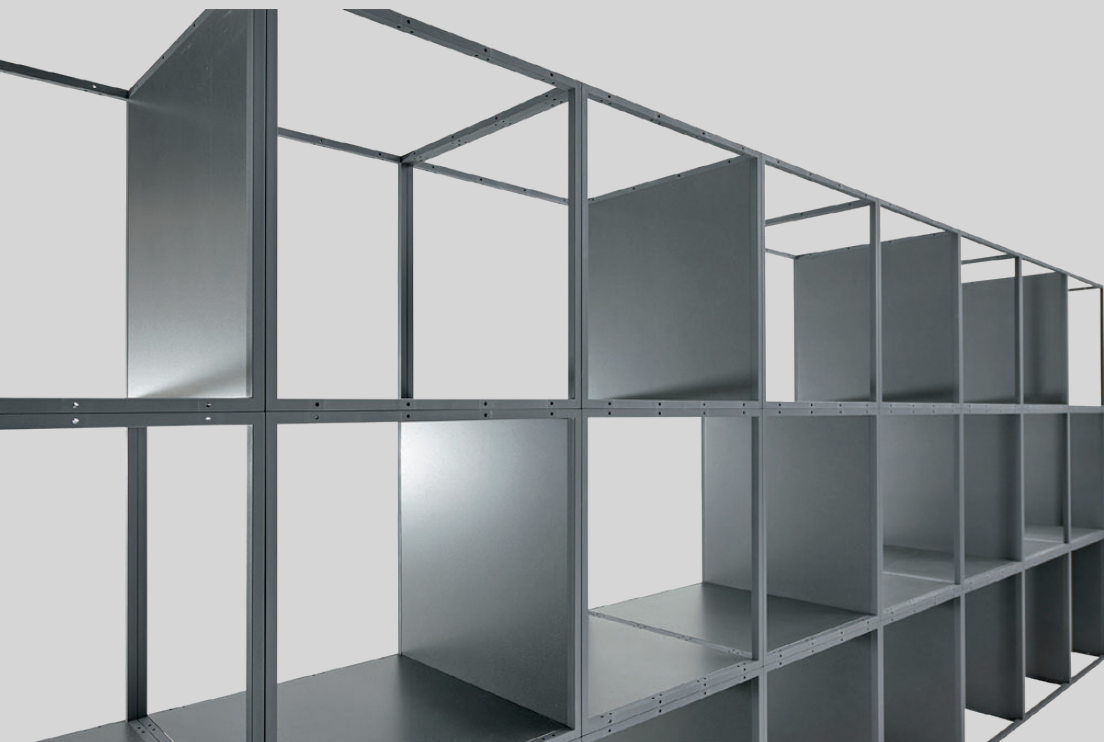
Adaptable. Durable. Elegant.

## Making Space Work

GRID is the ultimate flexible interior system. With its unprecedented adaptability, components from the GRID collection can be combined for a beautiful and functional interior.

GRID offers endless possibilities.

Here we provide you with an overview of the standard colours and materials you can use to design your GRID system.



## Black, White and Grey

The GRID system offers three standard colours: Black, White and Grey.

Each colour is carefully selected to represent its own distinct style. They all express minimalism, elegance and simplicity, and configurations can be designed to blend in or stand out in your surroundings.

The Nylon components (GRID Modules and Cross Braces) and lacquered MDF components (e.g. Shelves, Cupboards and Box Side Panels) are all available in these three colours. This makes it possible to use Black, White and Grey separately or in combination – creating endless design possibilities.

### **Black** – RAL 9011

Industrial and powerful with well-defined graphic lines.



### **Grey** – RAL 7043

Balanced and neutral with an urban expression.

### **White** – RAL 9016

Highlights objects and creates clarity.

Scale 1:1





## Surfaces

While Black, White and Grey are the GRID system's standard colours, a number of material surfaces are included in the collection. These materials can be combined in countless ways to create strong visual effects.

### Nature

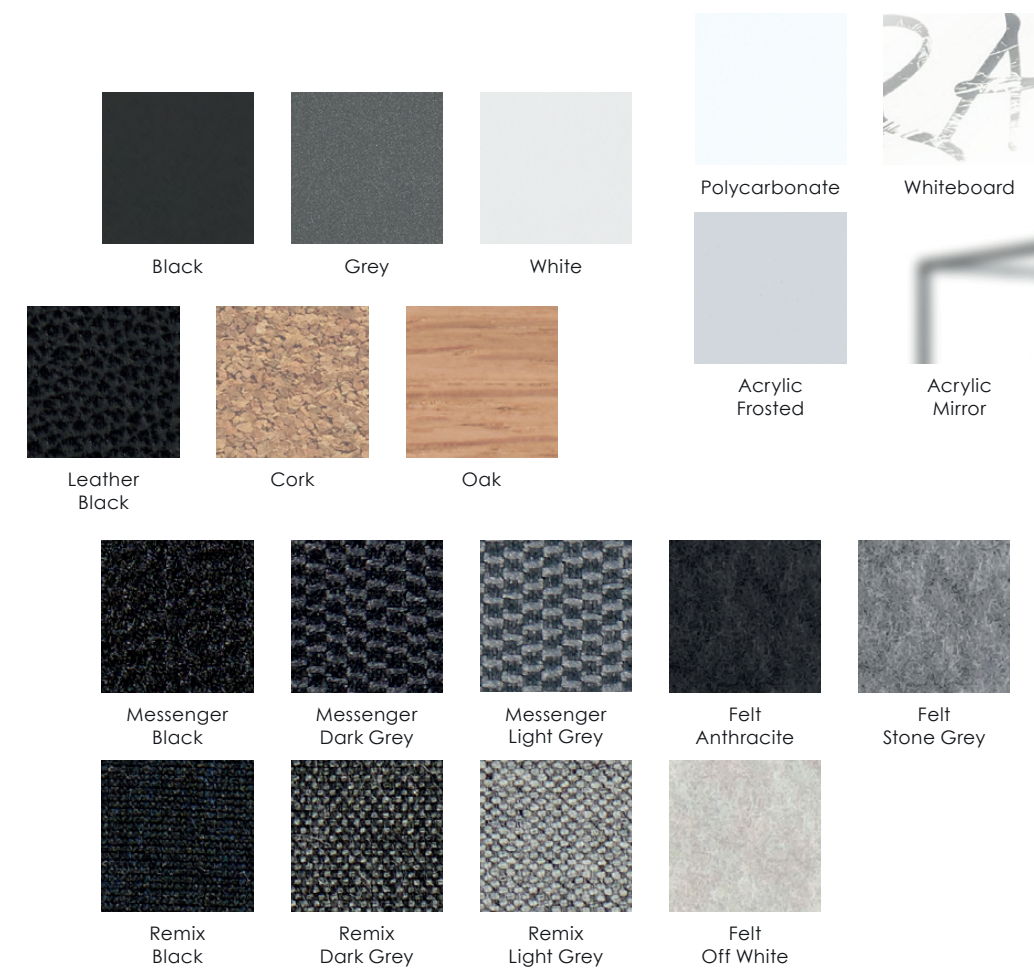
Oak veneer, cork and leather are natural materials with a heavier texture. Oak veneer adds a warm, calm and welcoming feeling to the GRID structure. Cork offers an uneven, golden surface and leather provides a natural and exclusive look.

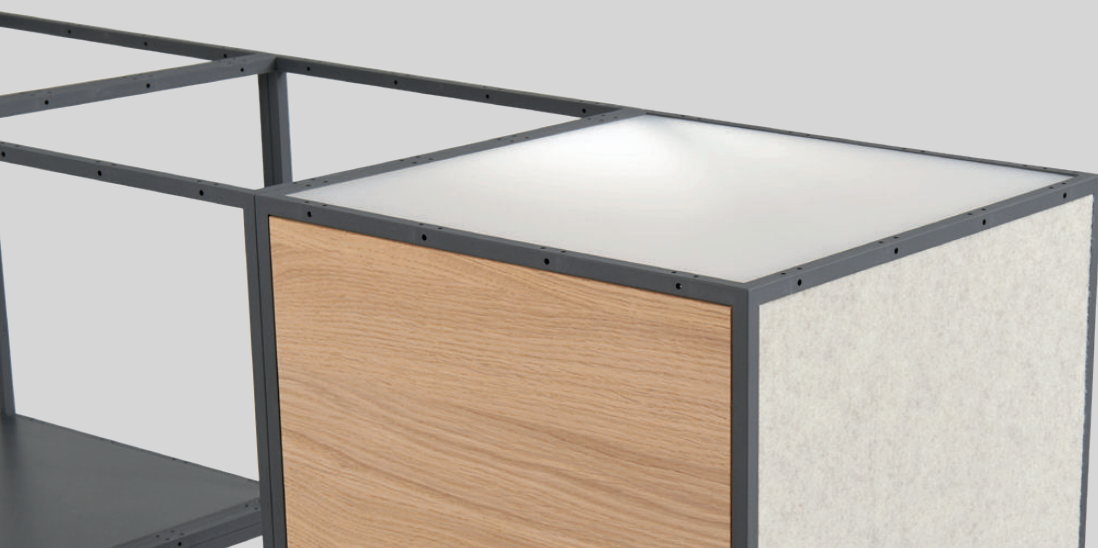
### Soft

Felt and textiles create a softer expression. Their textural surfaces are a beautiful contrast to the GRID structures and add softness to the design. The felt is available in three delicate grey tones: Off White, Stone Grey and Anthracite. The textiles are divided into two types: Messenger, expressing a formal look and feel, and Remix, representing a more casual expression.

### Hard

Whiteboard, Clear Polycarbonate, Frosted Acrylic and Acrylic Mirror are all hard and smooth surfaces with a distinctly different look and feel. Whiteboard is glossy, Clear Polycarbonate is transparent, Frosted Acrylic is semi-transparent, with an icy look, and Acrylic Mirror has a deep and dramatic effect.





## Combinations

While the GRID design is simple, it reflects designer Peter J. Lassen's artistic inspiration:

*"Good art never fully reveals itself. There is always another layer, another interpretation – we never become tired of art or nature because there is always another angle."*

With GRID, you can combine components in infinite ways. Feel free to mix colours and materials for a bolder style or go classic and create a monochrome look.

We hope to inspire and encourage you to create your own unique design.

Special colours and materials can be ordered upon request. Contact us for more information.



Combine **White, Grey** and **Polycarbonate** for a light and transparent expression.



Combine **Grey, Oak, Felt, Frosted Acrylic** and **Acrylic Mirror** for a balanced and soft-textured appearance.



Combine **Black, Grey** and **Cork** for a strong and dark look.





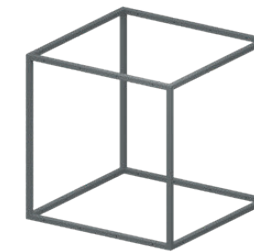
## Functions

GRID offers elegant design without compromising on functionality. The adaptability of GRID gives you the freedom to design a cohesive and multi-functional furniture system.

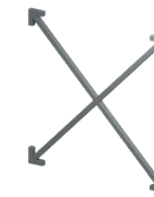
The lightweight Nylon GRID Modules – available in Black, White and Grey – are the building blocks of the system. In any colour, you can connect hundreds of modules – there is no limit to your design. Once the structure is in place, other components can be added. Choose between Black, White and Grey lacquered MDF components.

We welcome you to explore GRID.

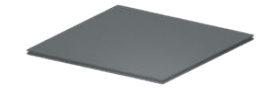
More than an elegant piece of furniture, GRID is a completely flexible and modular interior system with endless possibilities.



GRID Module



Cross Brace



Shelf/Side Panel



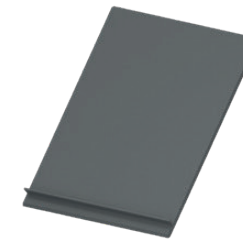
Box Side Panel



Plant Box Insert



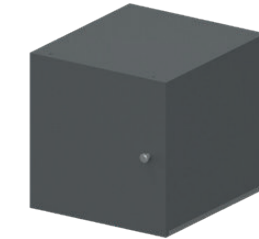
Topbox



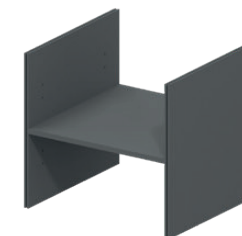
Magazine Shelf



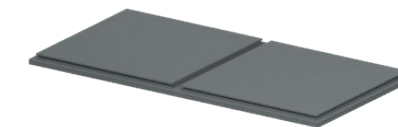
Drawer Insert



Cupboard Insert



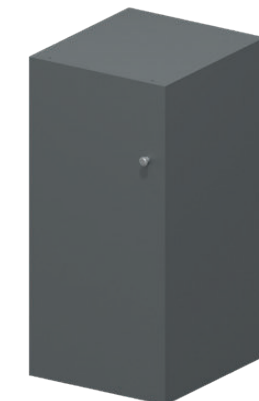
Divider Insert



Top/Base/Panel



Plinth



Cupboard Insert

## Selection of components

**GRID System ApS**

Smedevangen 2  
DK-3540 Lynge  
Denmark

+45 7262 6575  
[grid@gridsystem.dk](mailto:grid@gridsystem.dk)

[www.gridsystem.dk](http://www.gridsystem.dk)  
[www.instagram.com/gridsystem.dk](https://www.instagram.com/gridsystem.dk)  
[www.facebook.com/gridsystem](https://www.facebook.com/gridsystem)  
[www.pinterest.com/gridsystemdk](https://www.pinterest.com/gridsystemdk)  
[www.linkedin.com/company/gridsystem](https://www.linkedin.com/company/gridsystem)